



# INTERSTATE OVERPASS LIGHTING CONCEPT DESIGN PACKAGE



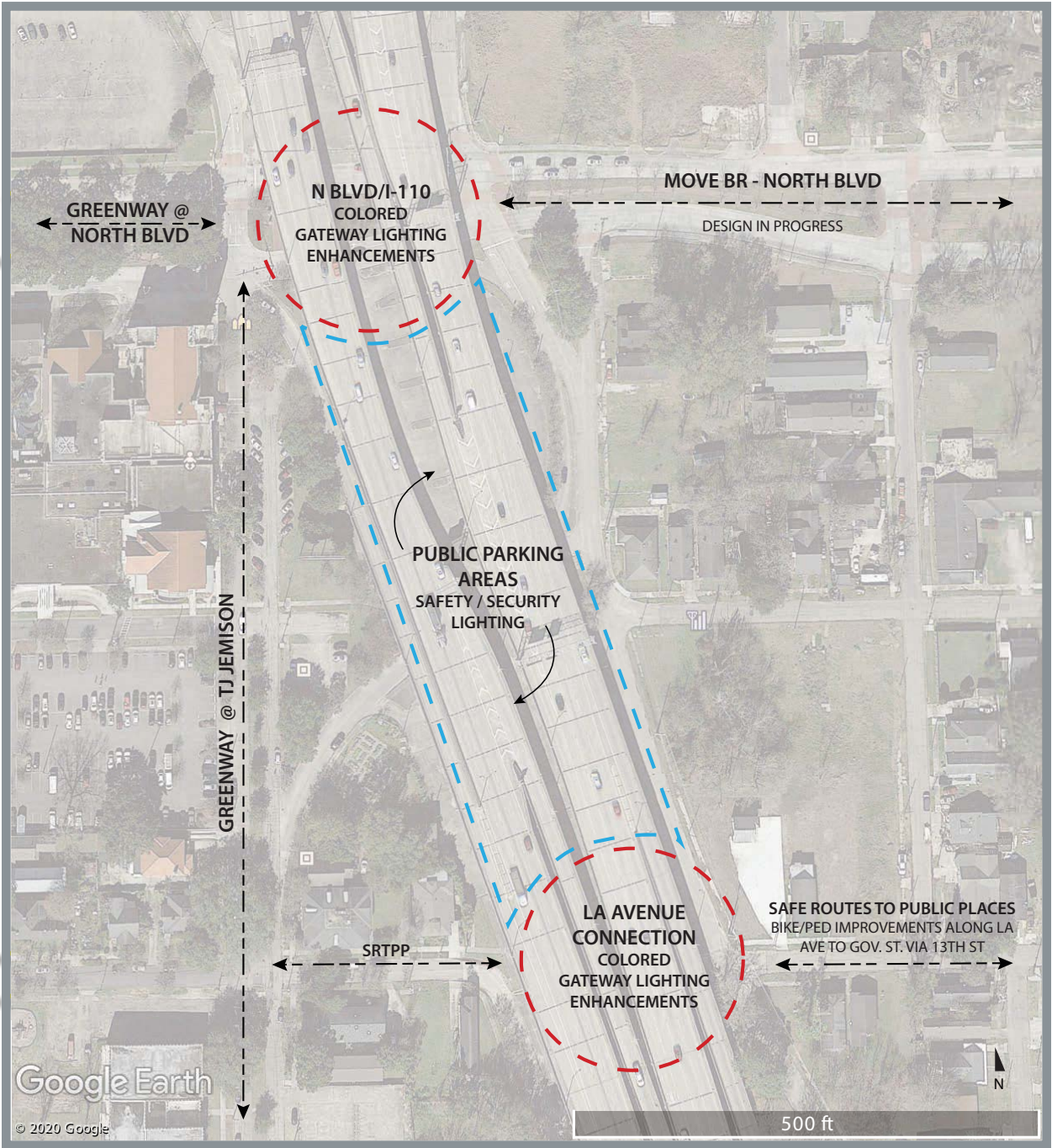
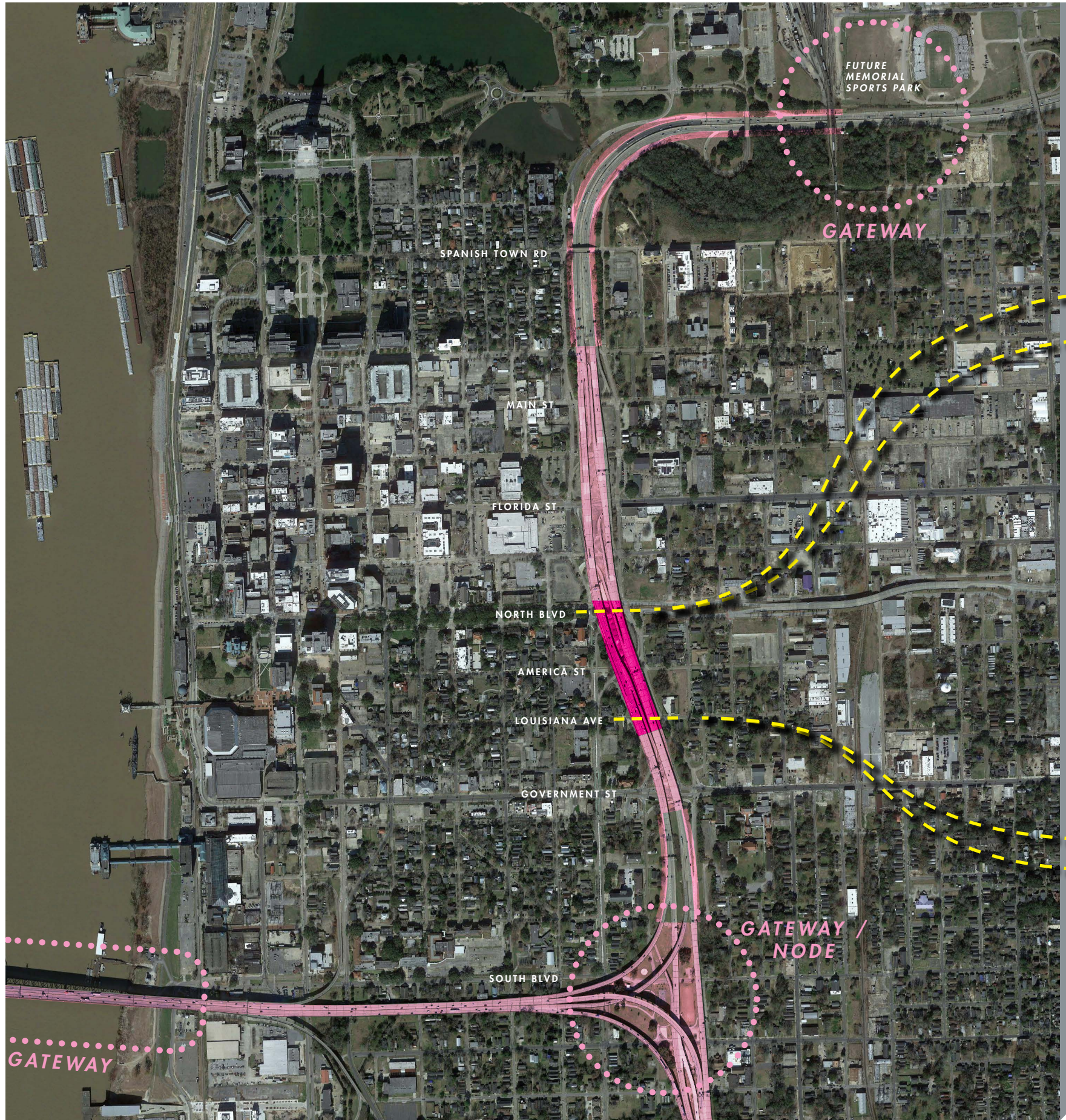
DESIGN TEAM:

WHLC Architecture  
M&E Consulting

CONTENTS:

PROJECT SCOPE	2
EXISTING CONDITIONS	4
LIGHTING PLAN	5
LIGHTING TYPES	6
PHOTOMETRIC RENDERINGS	7
CONCEPTUAL RENDERINGS	8
PROBABLE COST	18
LIGHT FIXTURES	20
PHOTOMETRIC ANALYSIS	22
EXISTING CONDITION PHOTOS	26
EXAMPLE PROJECTS	27



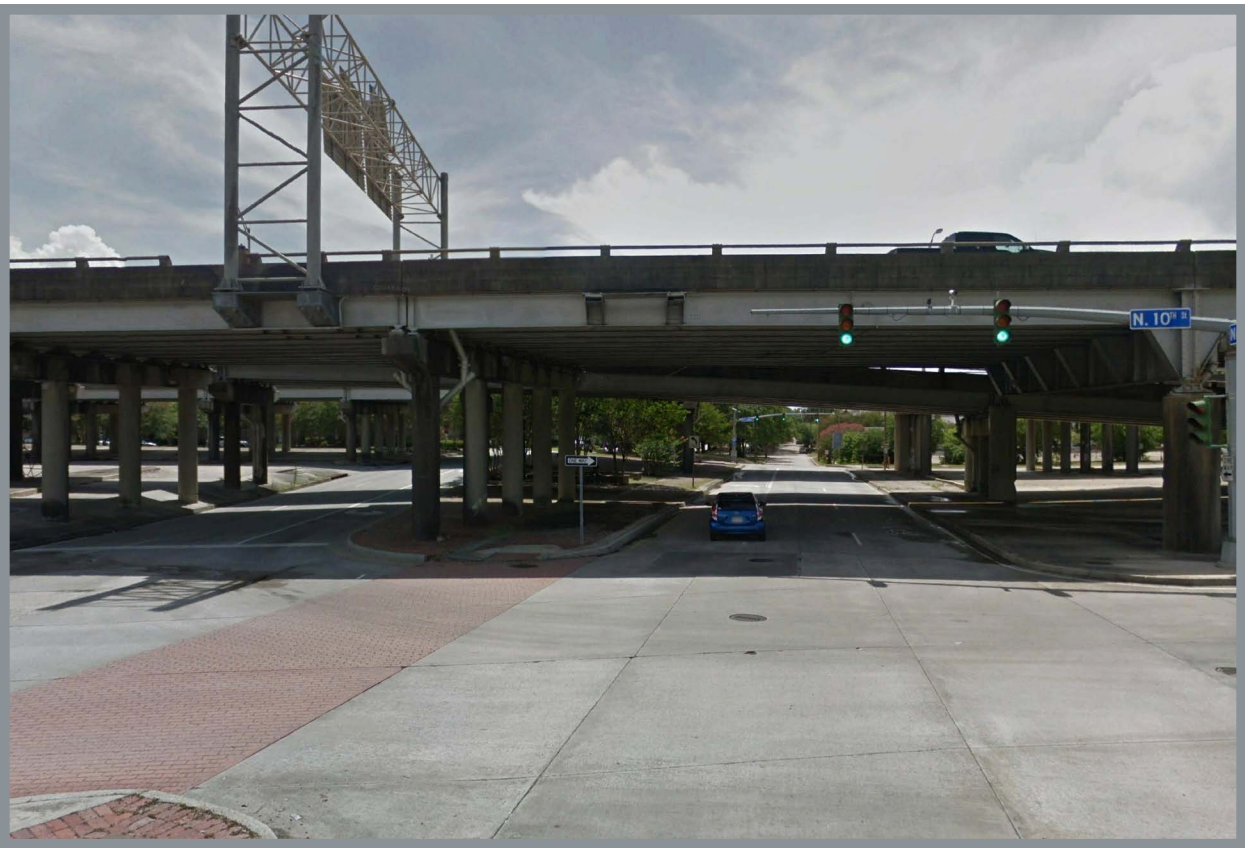


- CURRENT PROJECT: Louisiana Avenue to North Boulevard
- Future opportunities for enlightened infrastructure







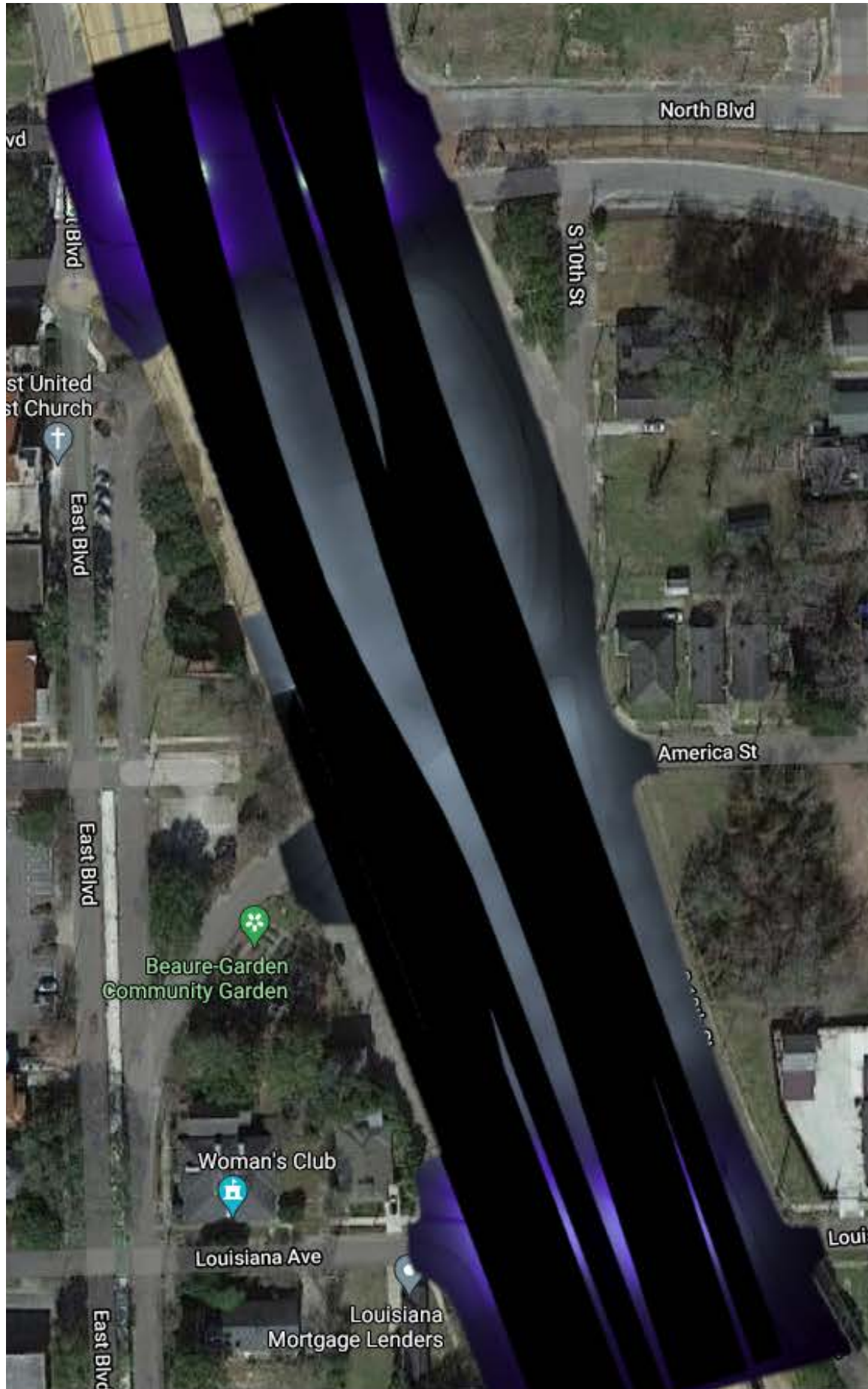


North Blvd, looking west



Louisiana Ave, looking west





### North Boulevard

- » Colorful, linear light fixtures along underside of interstate
  - a. Fixtures mounted to concrete beams
  - b. Fixtures mounted to steel girder beam are between gusset plates
- » Individual spotlights to highlight columns between lanes
- » “Starlight effect” traffic safety lighting (white) mounted to steel road deck beams
- » All fixtures are individually controllable and dimmable
- » All fixtures capable of RGBW

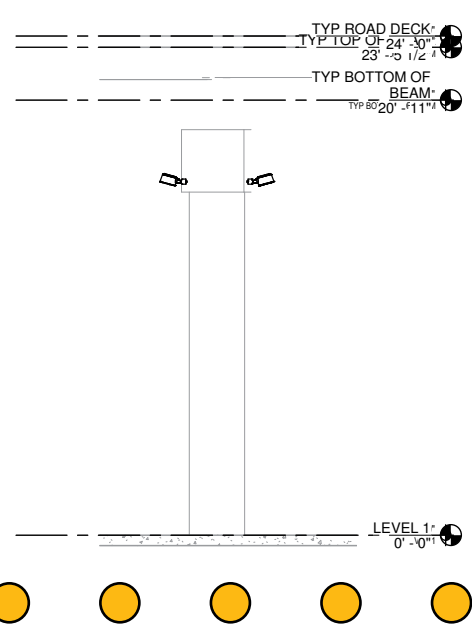
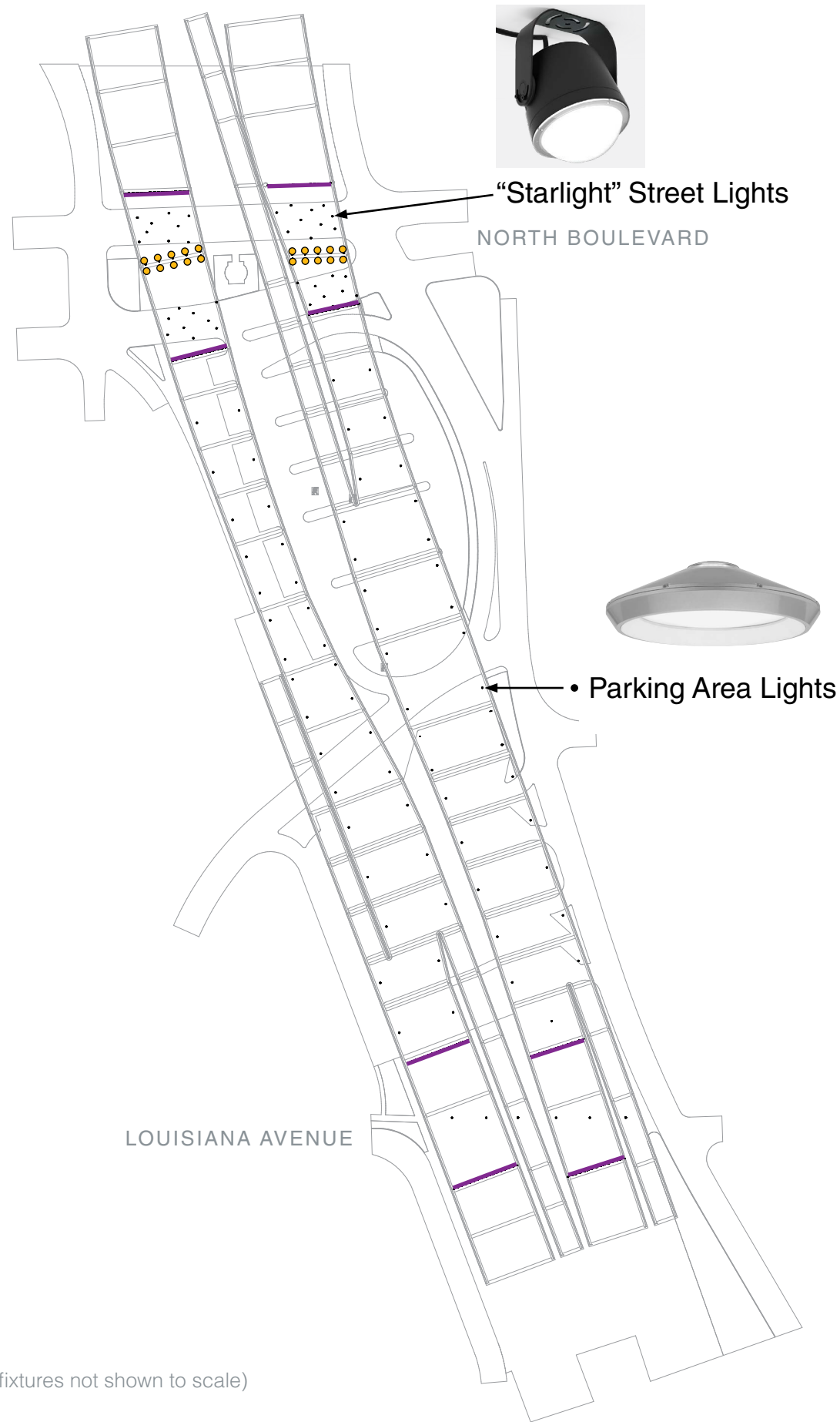
### Parking Area

- » White light only
- » Fixtures are mounted to bottom of interstate

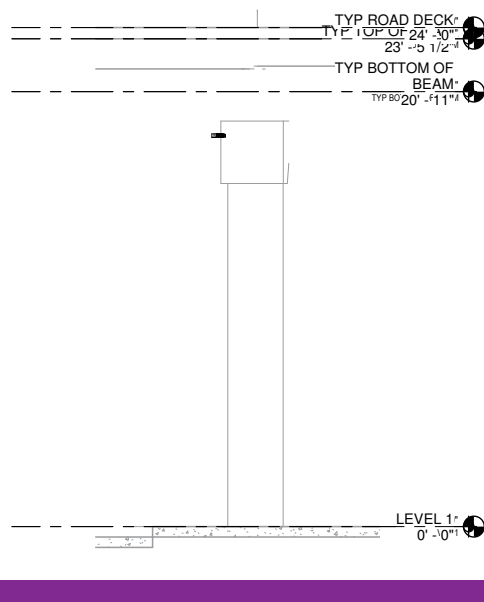
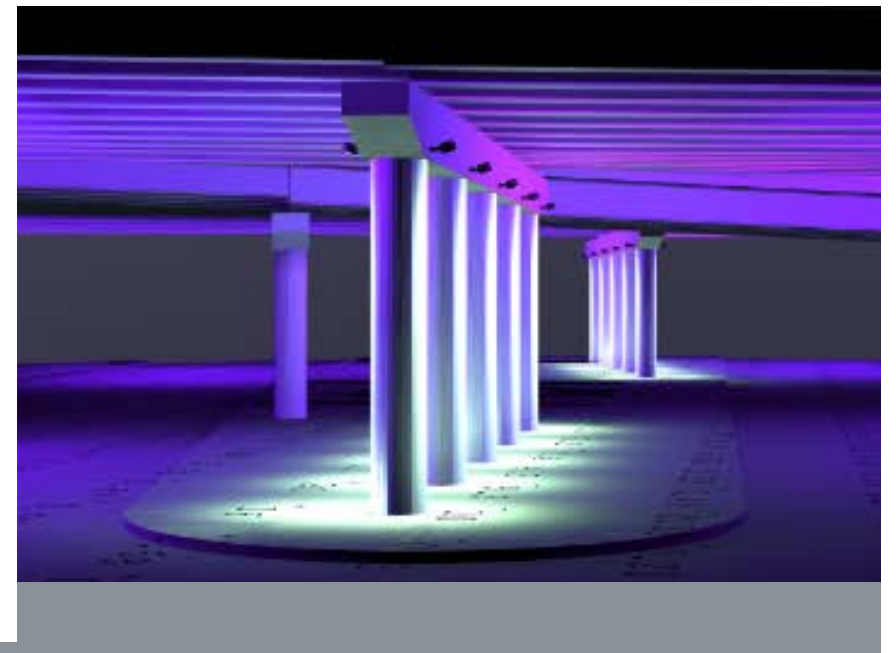
### Louisiana Avenue Connection

- » Colorful, linear light fixtures along underside of interstate
- » Fixtures are mounted to concrete beams
- » All fixtures are individually controllable and dimmable
- » Linear fixtures capable of RGBW
- » Same fixtures used in parking area are used along pedestrian path

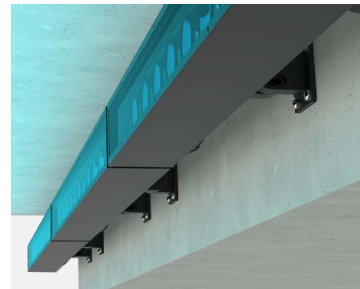




Column Downlights



Beam Mounted Linear Lights



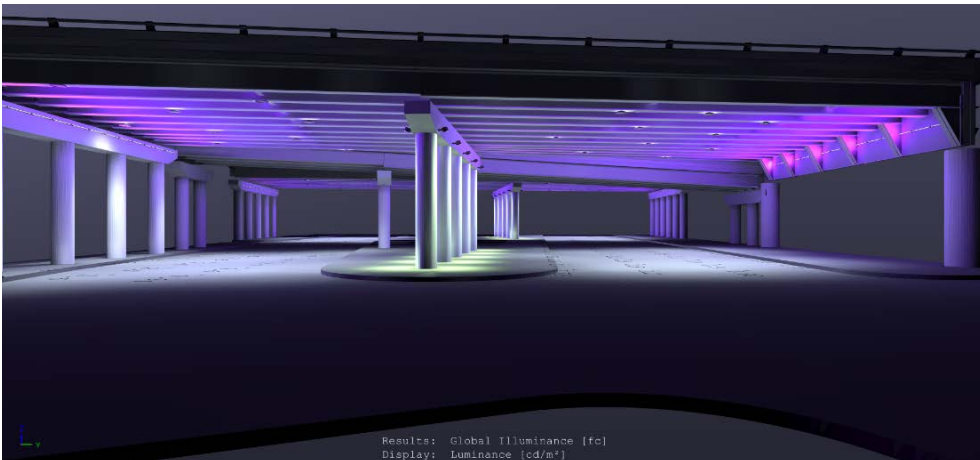


Initial Study Mock-Up



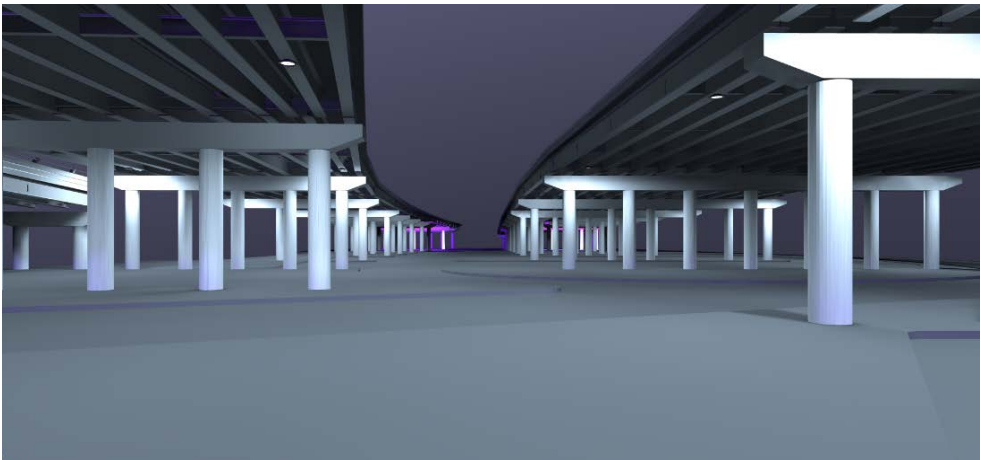
Photometric Renderings

North Boulevard



North Boulevard, looking west

Parking Area between Louisiana Ave. and North Blvd.

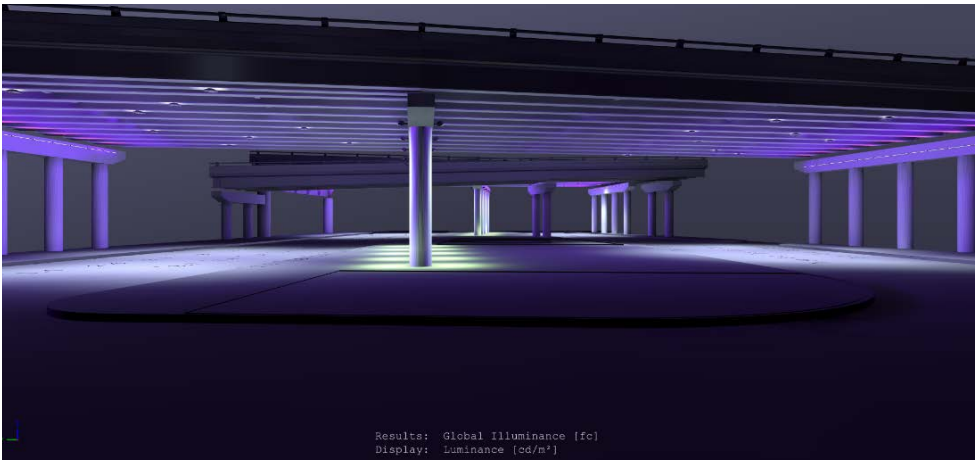


Parking Area, looking north

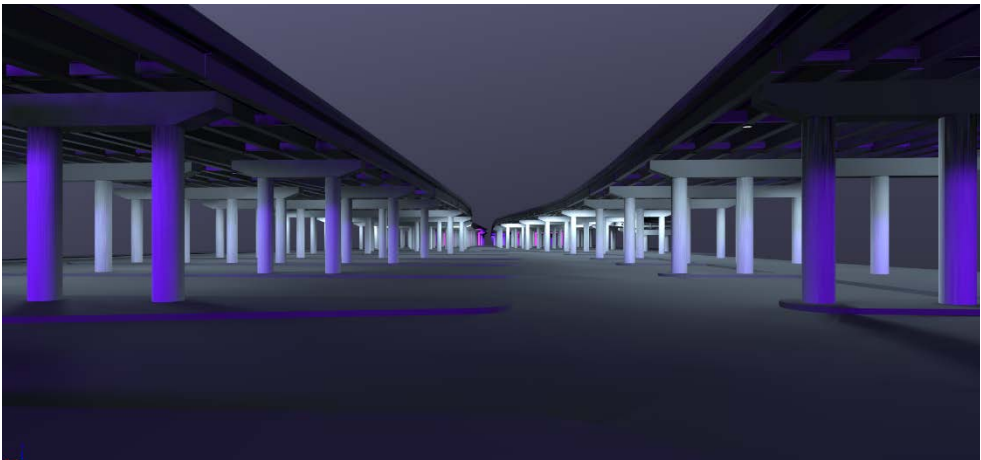
Louisiana Avenue Connection



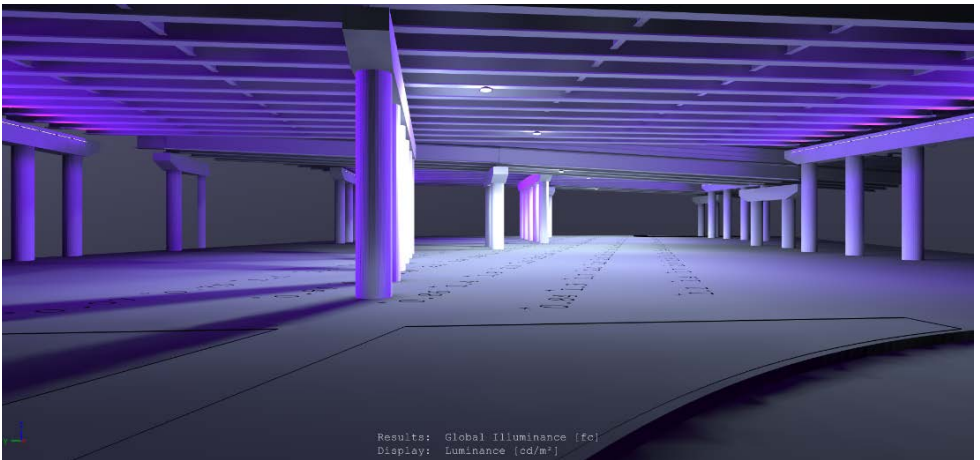
Louisiana Avenue, looking west



North Boulevard, looking east



Parking Area, looking south



Louisiana Avenue, looking east





North Boulevard, looking west toward downtown

(vehicle headlights are illuminating foreground)





July 4th and other patriotic days theme





Mardi Gras theme



Christmas theme



LSU related events theme



Southern University related events theme

























© 2021 WHLC | ARCHITECTURE





DOWNTOWN  
GREENWAY

LOUISIANA AVENUE CONNECTION





NORTH BOULEVARD	
Item	Cost
Lighting Fixture Package	\$93,000
Labor and Materials	\$39,000
New Electrical Service	\$10,000
Controls (RGB, scheduling, dimming)	\$15,000
Total:	\$157,000
PARKING AREA	
Item	Cost
Lighting Fixture Package	\$21,000
Labor and Materials	\$25,000
New Electrical Service	\$10,000
Controls (RGB, scheduling, dimming)	\$15,000
Total:	\$71,000
LOUISIANA AVENUE	
Item	Cost
Lighting Fixture Package	\$60,000
Labor and Materials	\$21,000
New Electrical Service	\$10,000
Controls (RGB, scheduling, dimming)	\$15,000
Total:	\$106,000

Project Total: \$334,000





APPENDIX



insight lighting

MEDLEY EXTERIOR REMOTE

COLOR CHANGING & ACTIVE WHITE SPECIFICATION

PROJECT: TYPE: CATALOG #: MER-

PROFILE

OUTPUT	LO (3.5W/FT), MO (9.0 W/FT), HO (17.0 W/FT)
OPTICS	7°X60°, 10°X10°, 10°X60°, 20°X20°, 20°X60°, 40°X40°, 40°X60°, 60°X60°, 100°
CCT	RGBWd, RGBWq, RGBAd, RGBaq, AWHd (AMBER+40K), LIFTED FULL SPECTRUM
PERFORMANCE	UP TO 28771.0 PEAK CANDELA
VOLTAGE	UNIVERSAL 120-277 V
POWER	REMOTE POWER SUPPLY
CONTROL	0-10V, DMX, LUTRON HI-LUME
DIMENSIONS	1.85" X 2.00"
HOUSING	PRECISION EXTRUDED ALUMINUM
LENS	HIGH DENSITY TEMPERED GLASS
FINISH	HIGH DURABILITY POWDER COATING
OPERATING TEMP	-20° C TO 50° C
WARRANTY	5-YEAR LIMITED
LUMEN MAINTENANCE	75,000 HOURS
CERTIFICATION	ETL AND cETL FOR IP67, IK07, 5G/3G OPTIONS

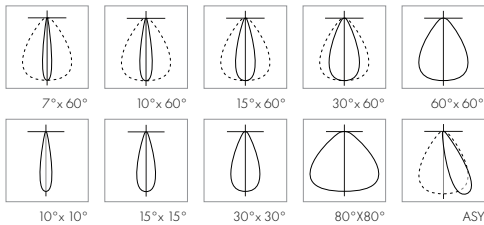


STANDARD FINISHES



OPTICS

NOT ALL AVAILABLE OPTICS SHOWN



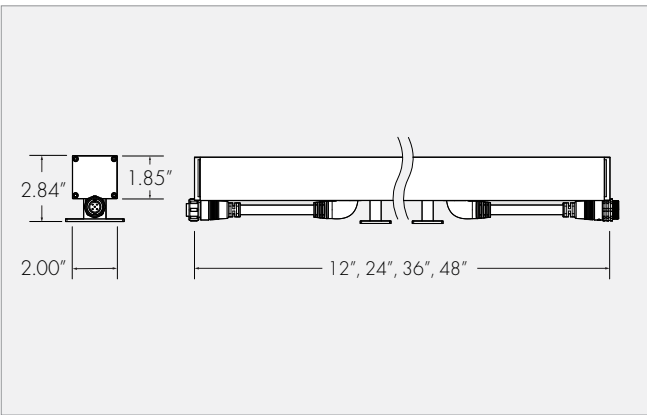
PERFORMANCE SAMPLE

go to performance data >

RGBWq, HO, 48"	10°X 60°	20°X 60°	40°X 60°	60°X 60°
LUMENS	2545 LM	2735 LM	2694 LM	2679 LM
CANDELA	8040	6159	2647	2167
EFFICACY	371 LM/W	379 LM/W	39.3 LM/W	36.5 LM/W

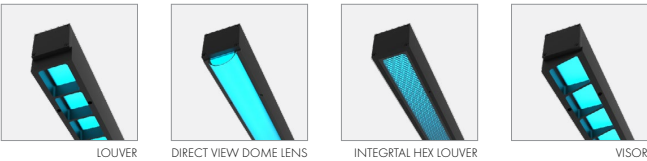
PROFILE

go to fixture dimensions >



OPTIONS

shown with white diffusing lense \*



NOTES

TYPE



Specifications	
Weight:	15lbs
EPA:	KM: .73 YM: .71

SAF7 RGBW  
SPECIALTY ARCHITECTURAL  
FLOOD  
MVOLT LED

HIGHLIGHTS

- Suitable for a variety of mounting applications including ground, wall, pole, stanchion
- Performance color mixing utilizing high output quad LED
- 3G vibration rating per ANSI C136.31
- DMX/RDM
- Taper-Lock technology provides full aiming integrity utilizing both a rugged knuckle and yoke design
- White color temperatures available in 30K and 40K
- 1,600lm
- IK10 option available



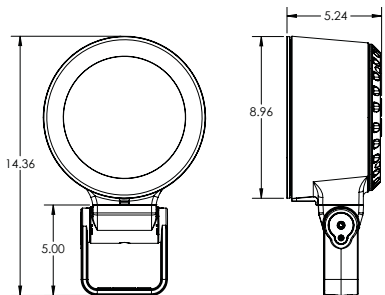
5  
YEAR  
warranty

67  
IP RATED

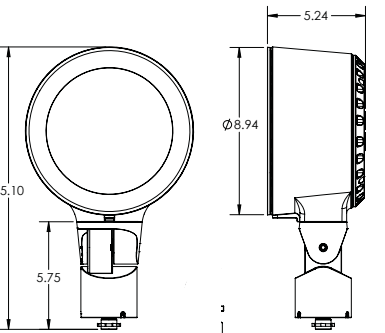


Buy American

DIMENSIONS



YOKE



KNUCKLE

LUMEN PACKAGES

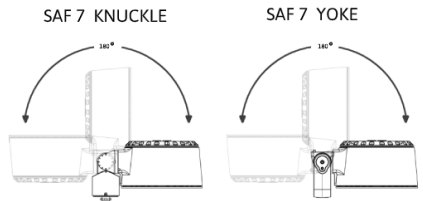
	10DEG	15DEG	20DEG	30DEG	40DEG	50DEG	70DEG
Delivered Lumens	1,639	1,564	1,554	1,533	1,508	1,497	1,451
Watts	45	45	45	45	45	45	45
LPW	36	35	35	34	34	33	32
Peak Candela	41,260	13,923	9,539	3,866	2,247	1,628	991
	15Vx60H	30Vx60H	60Vx15H	60Vx30H			
Delivered Lumens	1,600	1,544	1,497	1,475			
Watts	45	45	45	45			
LPW	36	34	33	33			
Peak Candela	4,002	2,207	4,150	2,098			

Note: Information based on RGBW4 @ P1

STANDARD DISTRIBUTION



AIMING DETAIL



© 2021 Acuity Brands Lighting, Inc. • One Lithonia Way, Conyers GA 30012  
Phone: 800-705-SERV (7378) • www.hydrel.com

SAF7\_RGBW | Rev. 03/09/21  
Page 1 of 8



PROJECT: TYPE: CAT. #: PS6 -  -  - DV -  - UNV -  -  -

PROFILE

LIGHT SOURCE	MEDIUM (15 W), HIGH (30 W)
WHITE CCT	2700K, 3000K, 3500K, 4000K
STATIC COLOR	RED, GREEN, BLUE, AMBER
PERFORMANCE	TBD
VOLTAGE	UNIVERSAL (120V-277V)
POWER	INTEGRATED POWER SUPPLY
CABLE COLOR	WHITE OR BLACK
DIMMING	0-10V, DMX
WEIGHT	TBD
HOUSING	HEAVY DUTY A380 DIE-CAST ALUMINUM
EPA	TBD
LENS	POLYCARBONATE
FINISH	HIGH DURABILITY POWDER COATING
WARRANTY	5-YEAR LIMITED
OPERATING TEMP	-40° C TO 50° C
LUMEN MAINTENANCE	100,000 HOURS
CERTIFICATION	ETL , cETL, IP66, IK09, OPTIONAL 3G



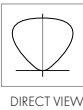
COMING SOON



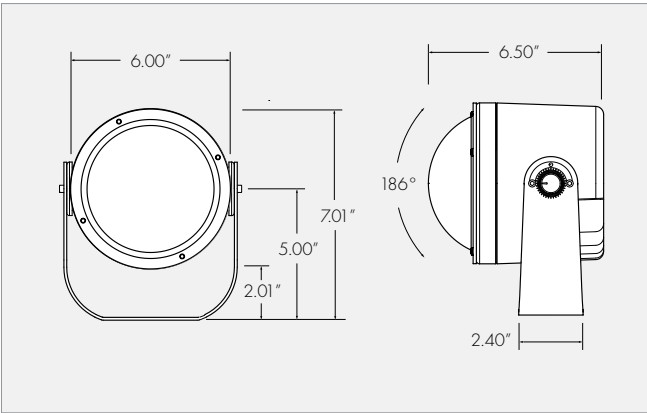
STANDARD FINISHES



OPTICS



PROFILE

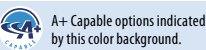
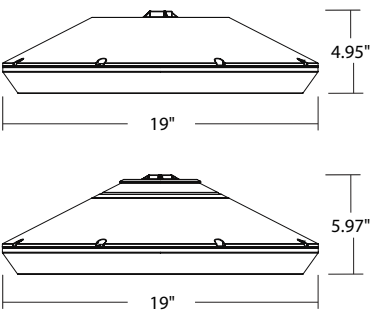


VCPG Ultimate  
LED  
Parking Garage



Specifications

Diameter:	19"
Height:	4.95" (6" with Up-Light)
Weight (max, with no options):	25 lbs



Ordering Information

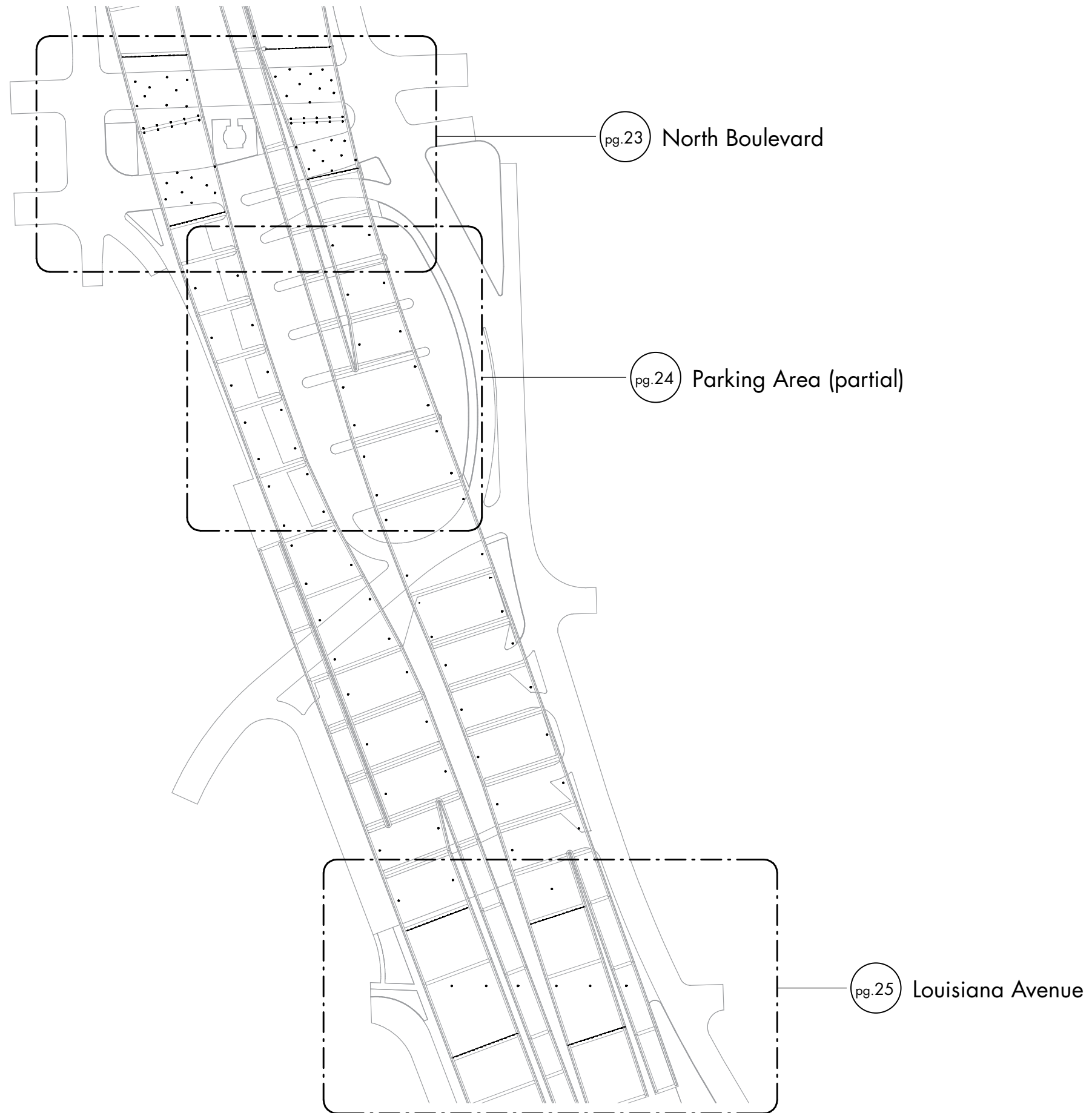
EXAMPLE: VCPGX LED V8 P3 40K 70CRI T5M MVOLT PM UPL2 DWHXD

VCPGX LED							
Series	LED Light Engines	Package	Color temperature	Color Rendering Index	Distribution	Voltage	Mounting
VCPGX LED	V4 4 Light Engines V8 8 Light Engines	P1 P2 P3 P4 P5 P6 P7 (with V8 only)	30K 3000 K 35K 3500 K 40K 4000 K 50K 5000 K	70CRI 80CRI	TSM Type V, medium TSR <sup>1</sup> Type V, rectangular TSW Type V, wide TSE Type V entry LANE <sup>1</sup> Drive lane	MVOLT 347 120 480 208 240 277 347 480	<b>Shipped included</b> PM Pendant mount standard (24-inch length supply leads) SRM Surface mount (24-inch length supply leads) ARM Arm mount (use RSXWBA accessory to mount to a wall)  <b>Shipped separately</b> YK Yoke/trunnion mount <sup>2</sup>

Options	Finish <i>(required)</i>
<b>Shipped installed</b> UPL1 Up-Light: 500 lumens UPL2 Up-Light: 700 lumens E8WC Emergency battery backup, CEC compliant (8W, -20°C min) <sup>3,4,5</sup> E10WH Emergency battery backup, CEC compliant (10W, 5°C min) <sup>3,4,5</sup> HA High ambient (50°C, only P1-P4) SF Single fuse (120V, 277V, 347V) DF Double fuse (208V, 240V, 480V) SPD10KV 10KV Surge Pack LDS36 36in (3ft) lead length LDS72 72in (6ft) lead length LDS108 108in (9ft) lead length DMG External 0-10V leads (no controls) <sup>6</sup>  <b>Shipped Separately</b> BDS Bird Shroud	<b>Standalone Sensors/Controls</b> PIR Motion/ambient sensor for 8-15' mounting heights PIRH Motion/ambient sensor for 15-30' mounting heights PIR3FC3V Motion/ambient sensor for 8-15' mounting heights, pre programmed to 3fc and 35% light output PIRH3FC3V Motion/ambient sensor for 15-30' mounting heights, pre programmed to 3fc and 35% light output PIR3FC3V924 UL924 Listed motion/ambient sensor for emergency circuit for 8-15' mounting heights, pre programmed to 3fc and 35% light output <sup>7</sup> PIRH3FC3V924 UL924 Listed motion/ambient sensor for emergency circuit for 15-30' mounting heights, pre programmed to 3fc and 35% light output <sup>7</sup>  <b>Networked Sensors/Controls</b> NLTAIR2 PIR nLIGHT AIR Wireless enabled motion/ambient sensor for 8-15' mounting heights NLTAIR2 PIRH nLIGHT AIR Wireless enabled motion/ambient sensor for 15-30' mounting heights NLTAIR2 PIR924 nLIGHT AIR Wireless enabled, UL 924 Listed motion/ambient sensor for emergency circuits for 8-15' mounting heights <sup>8</sup> NLTAIR2 PIRH924 nLIGHT AIR Wireless enabled, UL 924 Listed motion/ambient sensor for emergency circuits for 15-30' mounting heights <sup>8</sup> XAD XPoint™ Wireless enabled <sup>9</sup> XAD924 XPoint™ Wireless enabled, UL 924 Listed for emergency circuit <sup>9</sup> XAD PIR XPoint™ Wireless enabled motion/ambient sensor for 8-15' mounting heights XAD PIRH XPoint™ Wireless enabled motion/ambient sensor for 15-30' mounting heights XAD924 PIR XPoint™ Wireless enabled, UL 924 Listed motion/ambient sensor for emergency circuits for 8-15' mounting heights <sup>7</sup> XAD924 PIRH XPoint™ Wireless enabled, UL 924 Listed motion/ambient sensor for emergency circuits for 15-30' mounting heights <sup>7</sup>
	DWHXD White DNAXD Natural aluminum DDBXD Dark bronze DBLXD Black







**PRELIMINARY**

NOT FOR CONSTRUCTION,  
BIDDING, OR AS A BASIS  
FOR ISSING A PERMIT.  
DOCUMENTS PREPARED  
BY SCOTTY BAUDOIN  
LA#24710 WITH  
M&E CONSULTING, INC.

Overall Project Area



NORTH BOULEVARD PHOTOMETRICS							
Calculation Points Name	Metrics	Average	Maximum	Minimum	Avg/Min	Max/Min	Max/Avg
North Blvd.	Global Illuminance	1.27 fc	2.97 fc	0.01 fc	90.9	212.3	2.334535

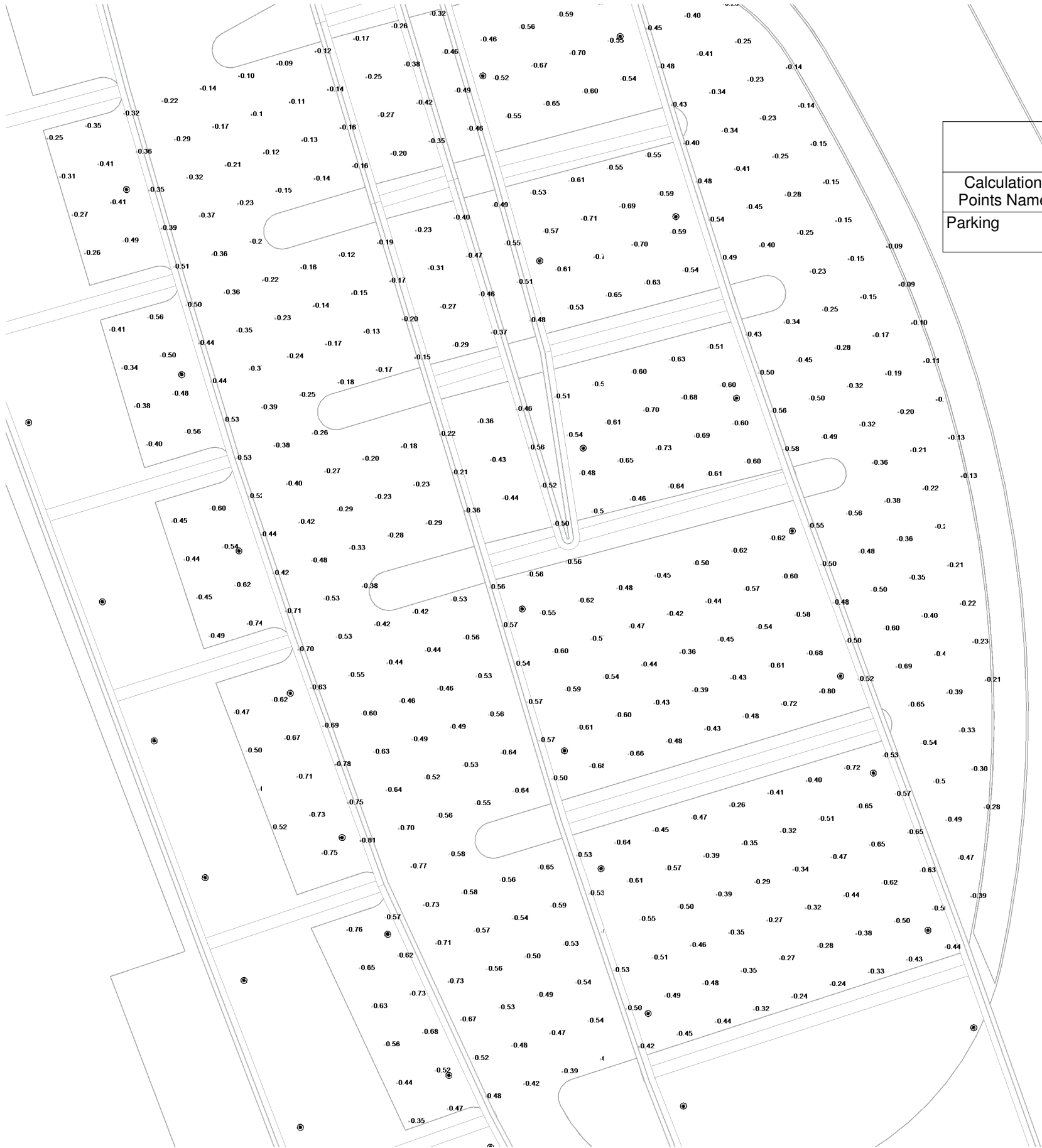


**PRELIMINARY**

NOT FOR CONSTRUCTION,  
BIDDING, OR AS A BASIS  
FOR ISSING A PERMIT.  
DOCUMENTS PREPARED  
BY SCOTTY BAUDOIN  
LA#24710 WITH  
M&E CONSULTING, INC.

North Boulevard





PARKING PHOTOMETRICS						
Calculation Points Name	Metrics	Average	Maximum	Minimum	Avg/Min	Max/Min
Parking	Global Illuminance	0.44 fc	0.81 fc	0.09 fc	5.1	9.2

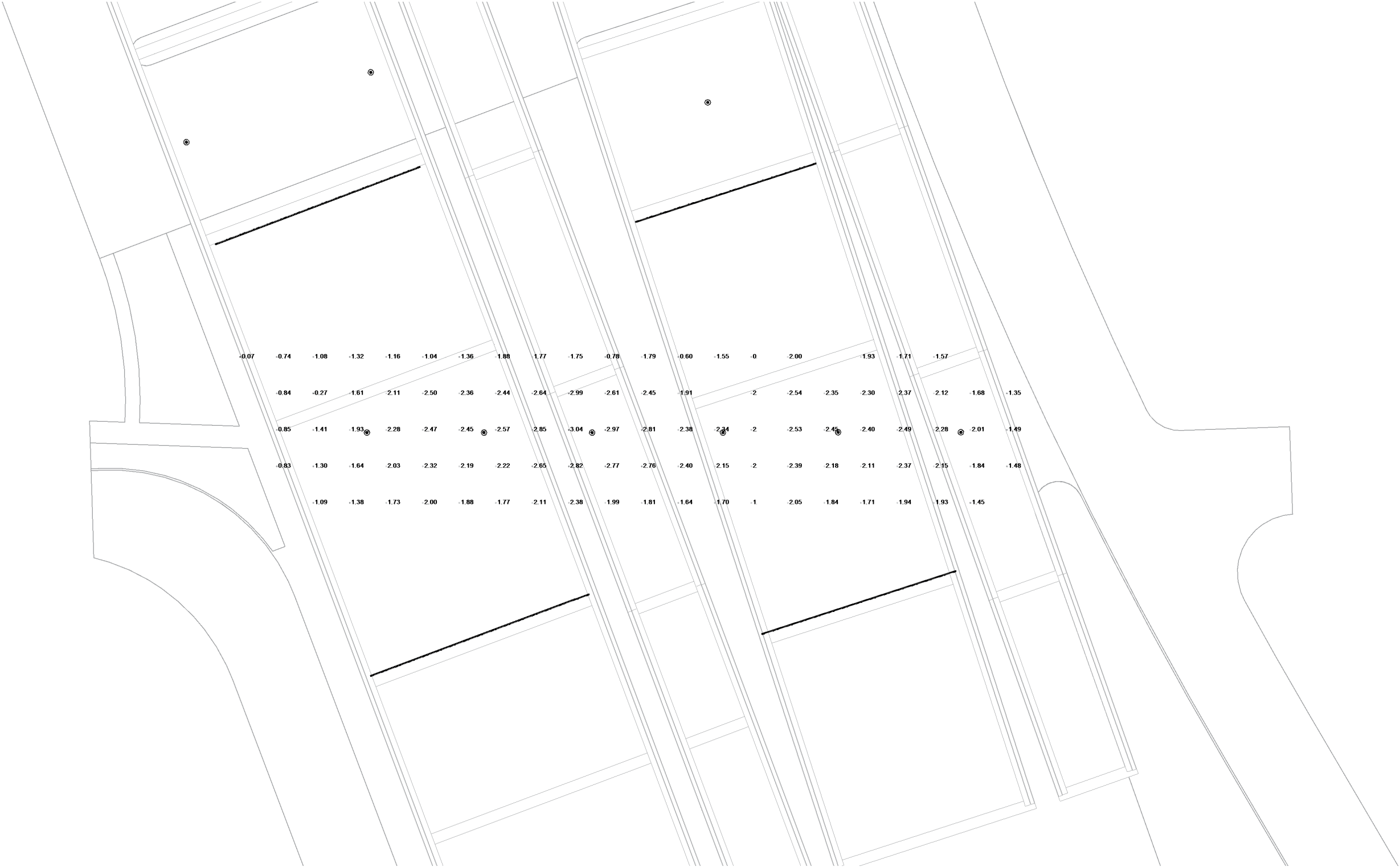
**PRELIMINARY**

NOT FOR CONSTRUCTION,  
BIDDING, OR AS A BASIS  
FOR ISSING A PERMIT.  
DOCUMENTS PREPARED  
BY SCOTTY BAUDOIN  
LA#24710 WITH  
M&E CONSULTING, INC.

Parking Area



LOUISIANA AVENUE PHOTOMETRICS						
Calculation Points Name	Metrics	Average	Maximum	Minimum	Avg/Min	Max/Min
Louisiana Ave	Global Illuminance	1.92 fc	3.04 fc	0.07 fc	28.5	45.0



**PRELIMINARY**

NOT FOR CONSTRUCTION,  
BIDDING, OR AS A BASIS  
FOR ISSING A PERMIT.  
DOCUMENTS PREPARED  
BY SCOTTY BAUDOIN  
LA#24710 WITH  
M&E CONSULTING, INC.

Louisiana Avenue





Louisiana Ave, looking east from west side of interstate



Louisiana Ave, looking south



Louisiana Ave, looking southeast



Louisiana Ave, looking east



Louisiana Ave, looking west



Louisiana Ave, looking north



Louisiana Ave, looking north from west side of interstate



Louisiana Ave, looking south from west side of interstate



